

Q: Can the Easy-Drive is available to use all the Hard Disk?

A: No, the e-Drive only supports 2.5-inch notebook hard disk.

Q: Which operating system can the Easy-Drive operate on?

A: The e-Drive can be operated on any of the following OS. Windows 98SE, Windows ME, Windows XP, Windows 2000, Mac 8.6 or above and Linux 2.4.0 or above.

Q: What kind of data can be stored on the Easy-Drive?

A: You can save any type of files on the Easy-Drive, whether they are text, graphic, program, music or multimedia files like movie and music files etc.

Q: How many films could be stored?

A: In case of 20GB hard disk inside, approximately one film size is 700MB more or less; so 28 films could be stored.

Q: Will virus infect the Easy-Drive? How can I prevent it?

A: Yes, the Easy-Drive is just like your hard drive, it can get virus via any files that you save onto it. Therefore anti-virus software is recommended.

Q: Can the Easy-Drive work on all computers?

A: Yes you can use it regardless of notebook or desktop computer, as long as it has a USB connection interface available, and driver has been set up properly.

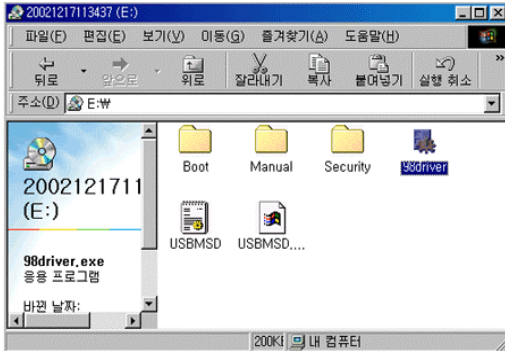
Q: When the light is flashing on the Easy-Drive, what does that mean?

A: When the light is flashing, that means the e-Drive is in use and data transfer is taking place between the Easy-Drive and host machine.

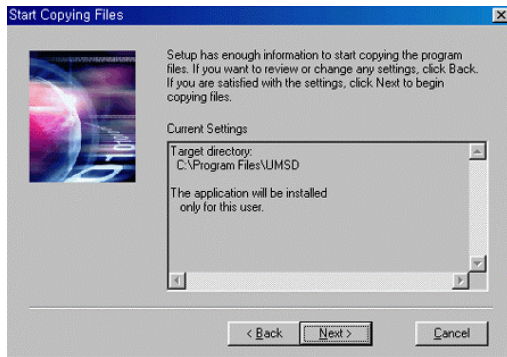
Q: How to set up USB driver for 98SE user?

A: The installing process is as follows.

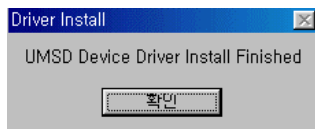
1. Insert the bundled CD into CD-ROM and double-click the 98Driver folder.



2. Click next.



3. Click the confirmation button of Drive Install Finished window.
The drive detects Easy-Drive automatically.

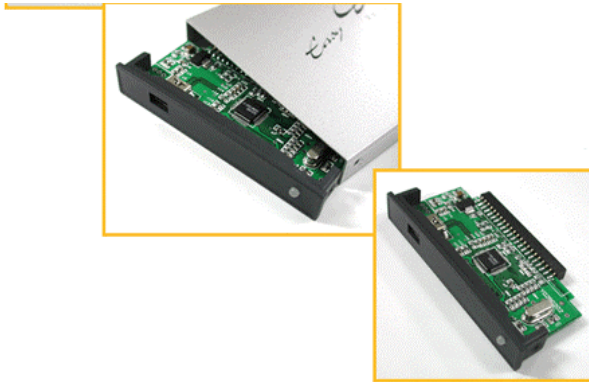


Q: How can fix HDD with the Easy Drive?

A: The assemble process is as follows.

1. To remove cap on the top as shown the picture.





2. To connect between HDD and Easy Drive.



3. To put them into the aluminum case.



4. To screw down both sides as of picture.

